

Rapid Mop

> User Guide

Rapid Mop
993493

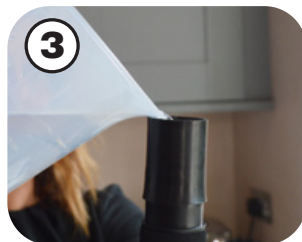
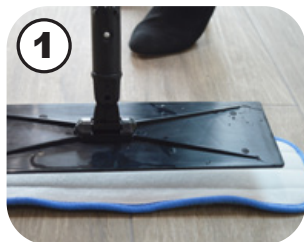
Blue Pad
993103

Performance Pad
X0013000

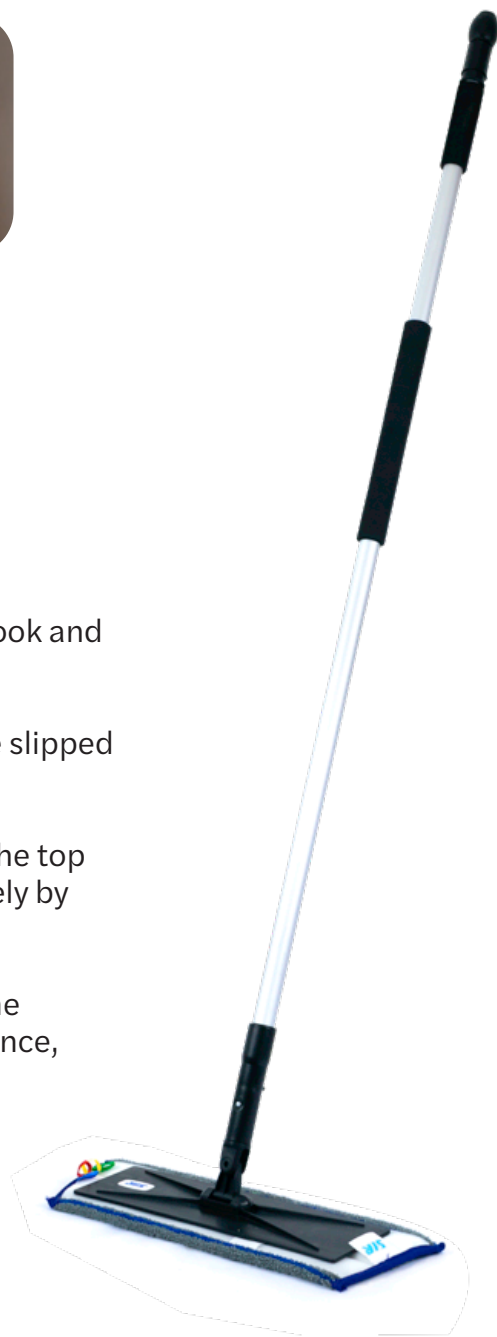
Fringe Pad
X0014000

Dispad
X0215202

Disposable Pad
994551



- 1** Take the microfibre heads and attach it to the frame with the hook and loop fitting.
- 2** Unscrew the cap from the pole. A colour coded ring can then be slipped onto the end of the handle at this stage if required.
- 3** Fill the pole with 480ml of water only to the level indicated by the top of the metal rod located inside the pole. Replace the cap securely by screwing into position. *
- 4** At the starting point place the mophead flat on the floor with the spray jets facing to the front or back depending on your preference, you can tell where the spray jets are by looking for the arrows on the system. Then press down on the thumb operated button on the top of the pole and three jets will spray water onto the floor.
- 5** Now move the mophead over the wet area evenly, lifting dirt and dust as you go. Repeat the process until the head becomes saturated or the system requires re-filling.



Before re-filling the system check the mophead and if required replace with a clean mophead. Launder dirty mopheads using a washing cycle, allowing the head to dry before re-using it. It's recommended that you have more than one mophead with each system.



***Never fill the pole with very hot or boiling water and always remove all traces of cleaning liquids when not in use.**

Using chemicals may affect product warranty.

SIR

syrcclean.com

Rapid Mop

> User Guide

Rapid Mop
993493

Blue Pad
993103

Performance Pad
X0013000

Fringe Pad
X0014000

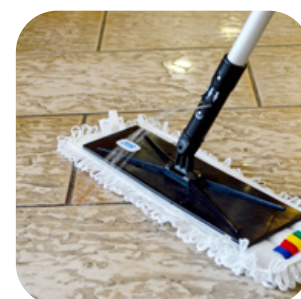
Dispad
X0215202

Disposable Pad
994551

The Rapid Mop gives a whole new meaning to sweeping and mopping. Where areas are only lightly soiled but in need of good thorough dust control, **THE RAPID MOP IS IDEAL.**

Once it has been established that an area in a building only needs light maintenance treatment then that is what it should get. A great deal of money can be saved by applying light and easy cleaning techniques to certain areas where most others call for heavy duty procedures. By carefully studying various areas, light duty cleaning can be safely installed, but be aware not to ask too much from light duty equipment. Dirt and dust quickly become overbearing, causing breakdown in cleaning schedules and lowering of standards.

The Rapid Mop works by using the handle of the mop as a water reservoir. A thumb operated button on the top of the handle releases water forwards out of the three jets placed just above the pad holder so that the pad can utilise the moisture to clean. The pad itself uses the hook and loop fitting to attach to the top of the holder. The reservoir is replenished via the removable ball end at the top of the handle by simply unscrewing.



Colour coded rings easily fit onto handle located in the groove.

SIR

syrcclean.com